



Walvis Bay and its role as a logistics hub for the SADC region



Your strategic gateway to Southern Africa, Europe and the Americas



Christian Faure

Executive: Marketing and Strategic Business Development

NAMPORT AT A GLANCE



WWW.NAMPORT.COM

CONTENTS

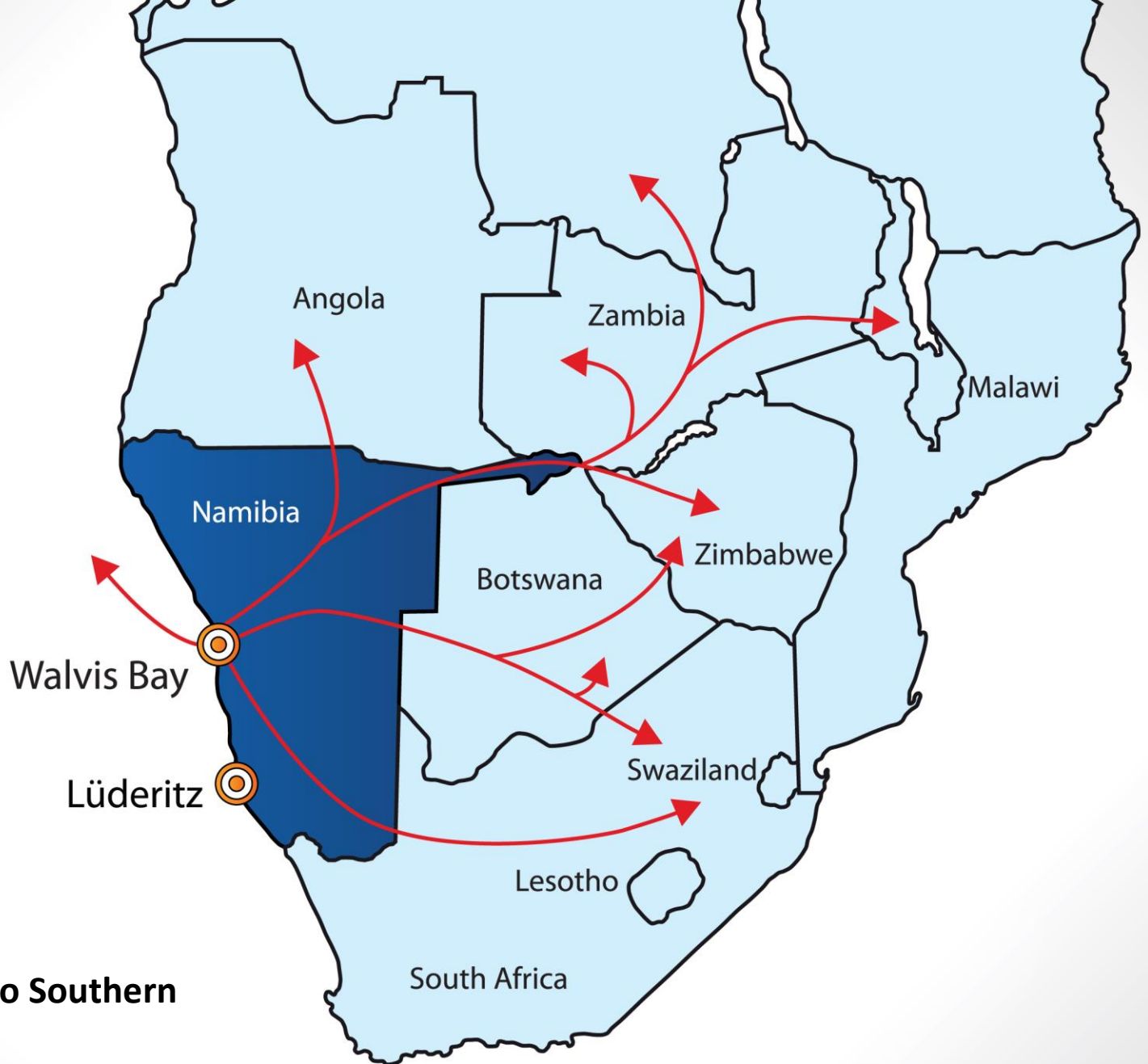


1. **Namport and market environment**
2. **Walvis Bay town dynamics**
3. **New terminal developments**



NAMPORT - MARKET ENVIRONMENT

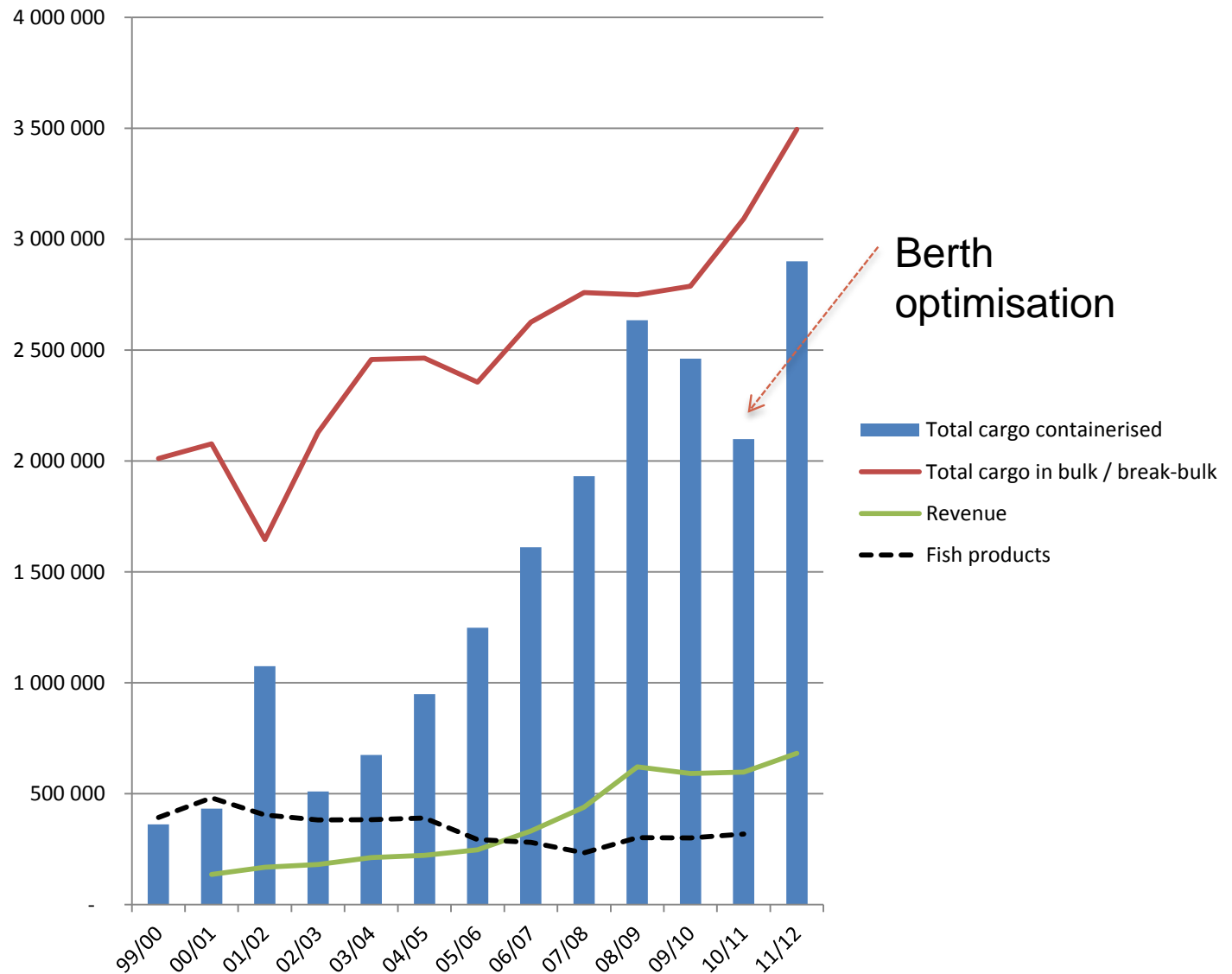


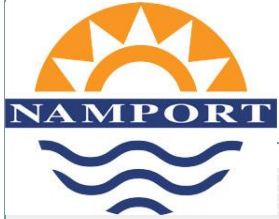


**Preferred access to Southern
Africa**



Namport volume growth (in tons)

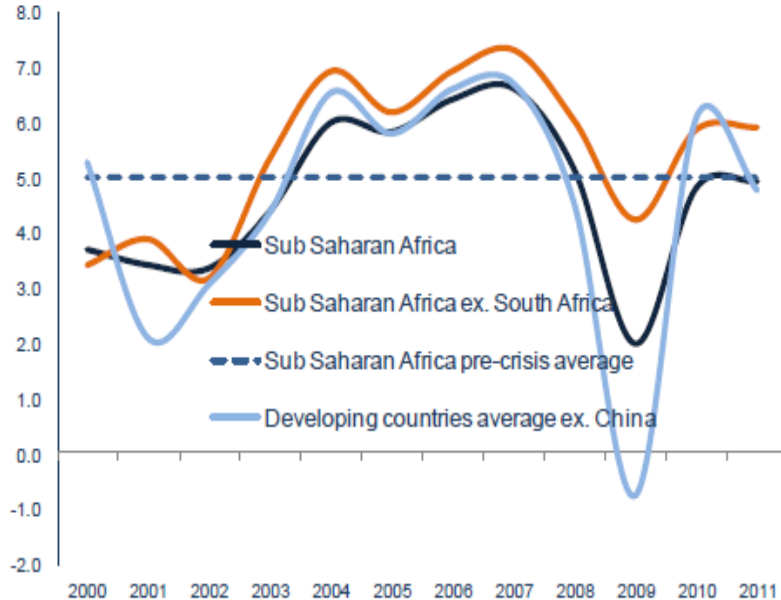




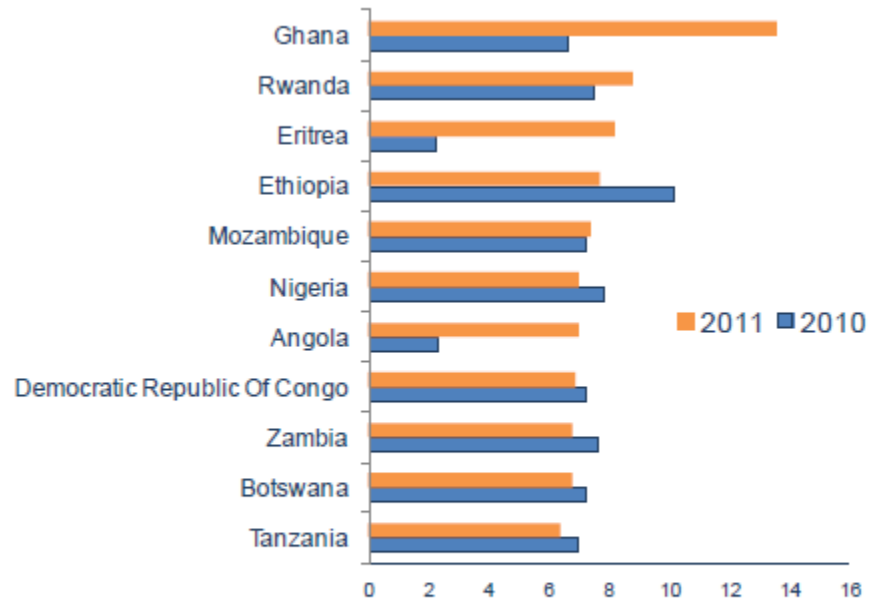
Regional Activity

The economic growth in the region exceeds that of most traditional markets and is the key to our sustainability.

Percent growth in GDP



Source: World Bank.



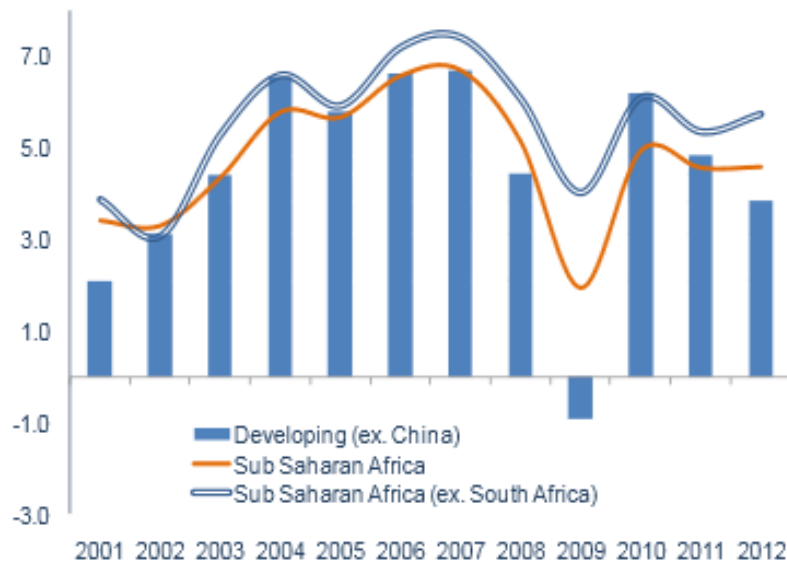
Source: World Bank



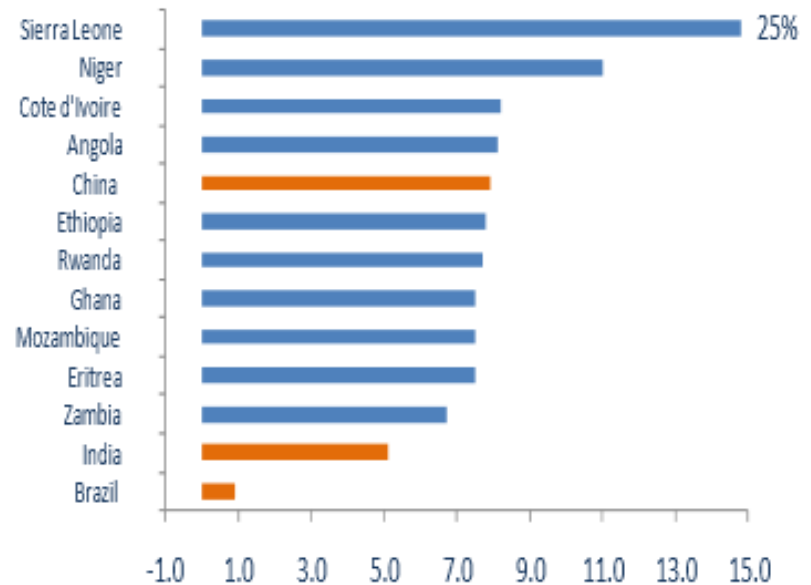
Regional Activity

The economic growth in the region exceeds that of most traditional markets and is the key to our sustainability.

(real GDP growth, % ch)



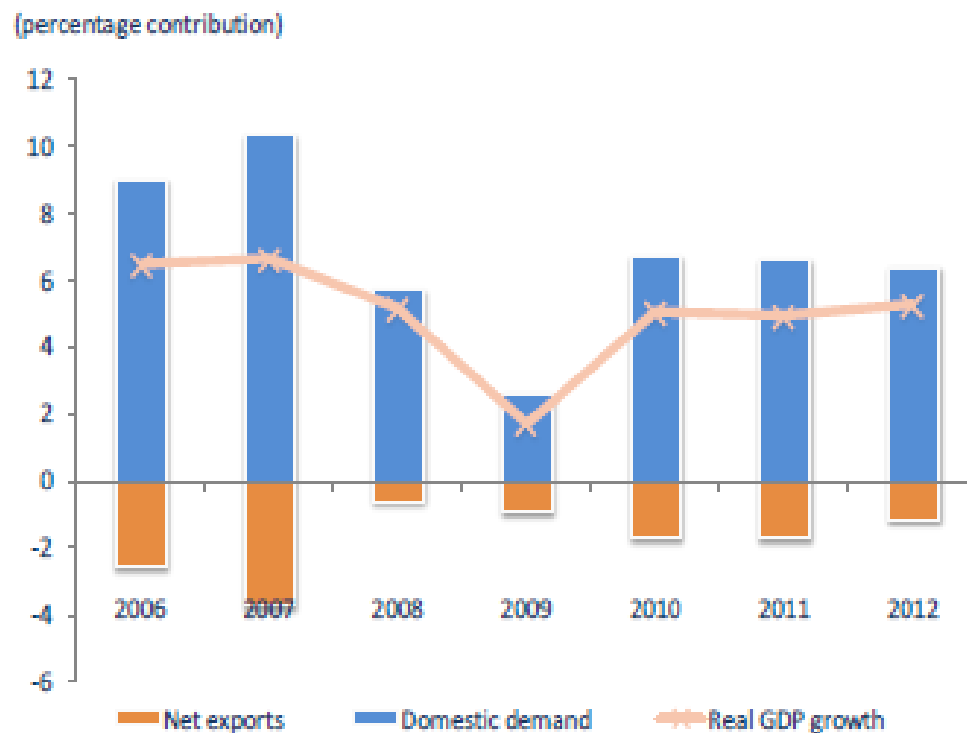
Source: World Bank



Source: World Bank



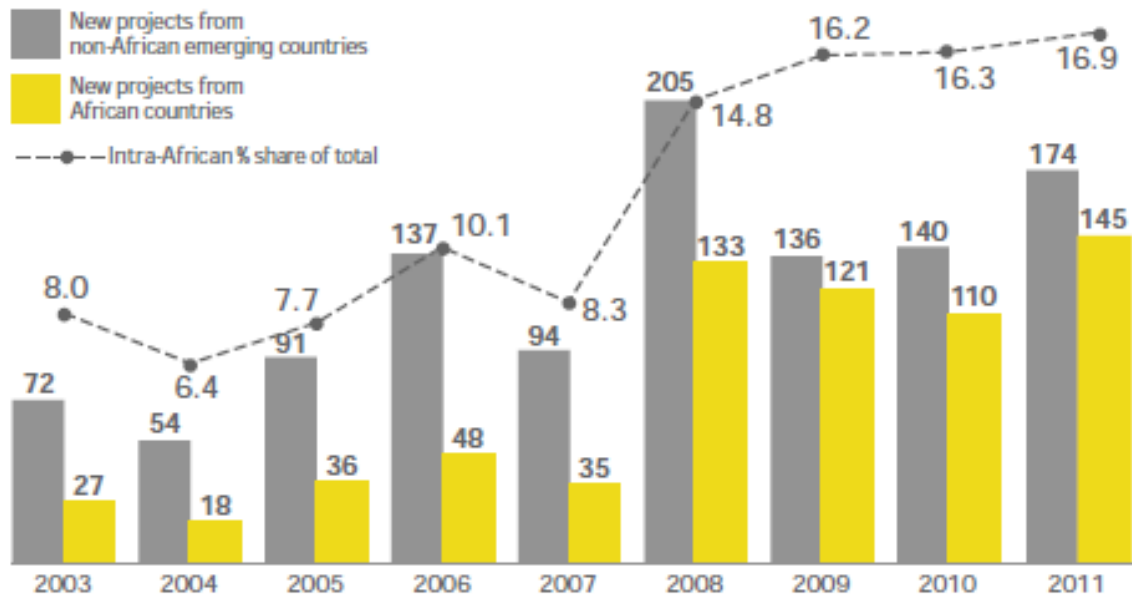
Domestic consumer spending still driving growth hence increased trade



Source: World Bank.

Market Environment

Intra-African FDI has grown at a compound rate of 42% since 2007



Source: fDi Intelligence, data as of 3 February 2012; Ernst & Young.

How connected is Namibia?

Liner Shipping Connectivity Index

In the past 7 years, Namibia has improved from position 102 (out of 148 countries surveyed) to position 72. This drives down freight rates for customers that the port serves.

Namibia has improved even further since 2011 in terms of its connectivity to international markets. And this during a period when other regional ports have declined.

Annex VI. UNCTAD Liner Shipping Connectivity Index (continued)

Country or territory	Index points					Rank 2004	Rank 2011
	2004	2010	2011	Average annual change 2004–2011	Change 2011/2010		
Namibia	6.28	14.45	12.02	0.82	-2.43	102	75
Kenya	8.59	13.09	12.00	0.49	-1.09	84	76

South Africa

35

2012

72

85

39

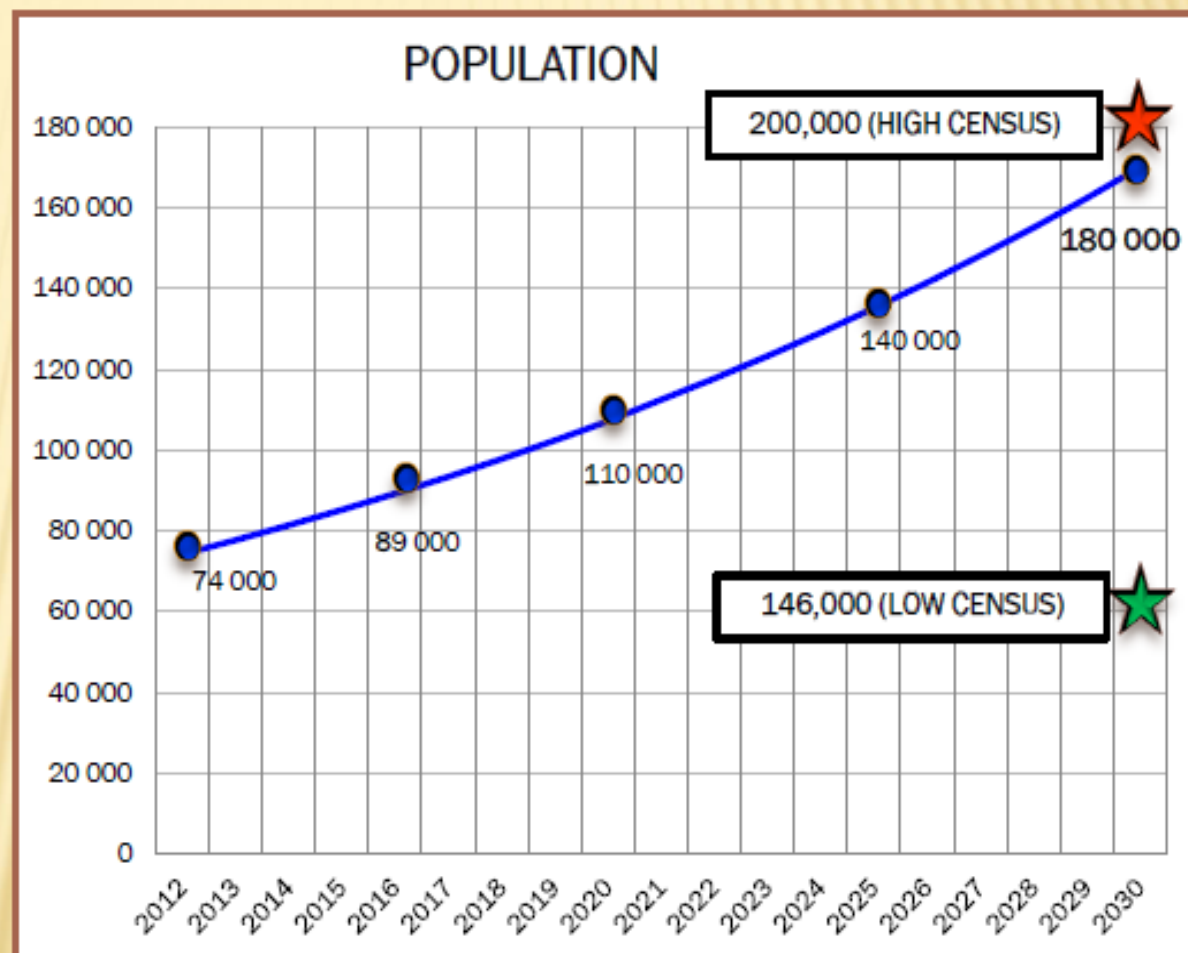


WALVIS BAY DYNAMICS



2012 WALVIS BAY POPULATION : GROWTH RATE

YEAR	POPULATION
2012	74,173
2013	77,659
2014	81,309
2015	85,130
2016	89,132
2017	93,321
2018	97,707
2019	102,300
2020	107,107
2021	112,414
2022	117,697
2023	123,229
2024	129,021
2025	135,085
2026	141,434
2027	148,081
2028	155,041
2029	162,328
2030	169,957



More than double in next 17 years

2030 FUTURE LAND REQUIREMENTS

LAND CATEGORY	LAND REQUIRED 2030 (Ha)	EXISTING LAND 2012 (Ha)	ADDITIONAL LAND NEEDED (Ha)	COMMENT
RESIDENTIAL	3,440*	1,050	2,390	Assumes 500 Ha for shack dwellers
TYPE Meersig/ Central	730	610	120	
TYPE Naraville	470	130	340	
TYPE Kuisebmond	1,740	310	1430	
TYPE Backyard Shacks	500 (say)	nil	500	Rental? Flats or continued back yards.
BUSINESS/OFFICE	70	55	30 (say)	Existing Land underutilised
INDUSTRY	?	340	300 (say)	Depends on demands associated with port
TOTAL			2,720	

Source: Urban Dynamics Town and Regional Planners – Integrated Spatial Development Framework

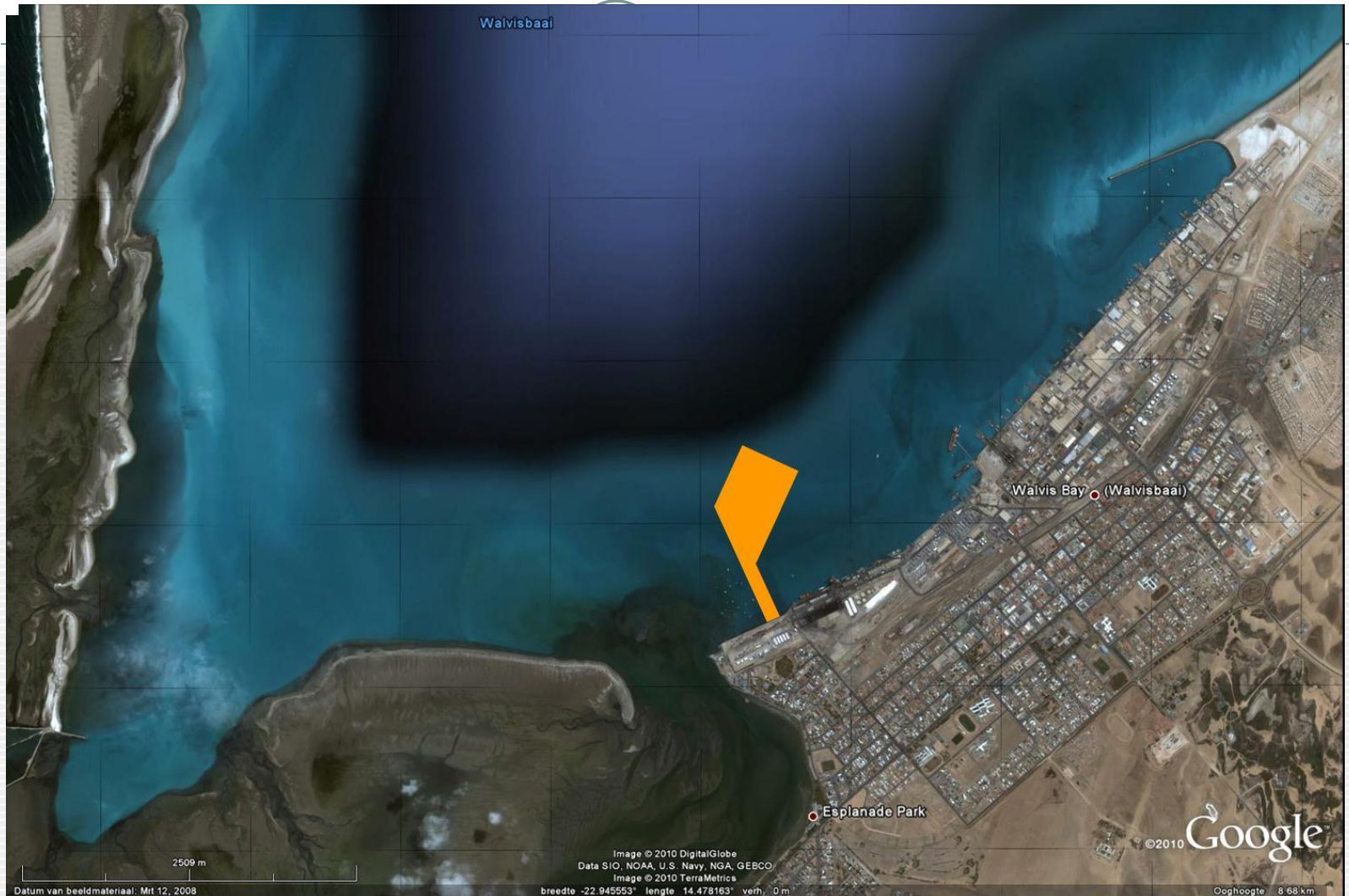


NAMPORT TERMINAL DEVELOPMENTS

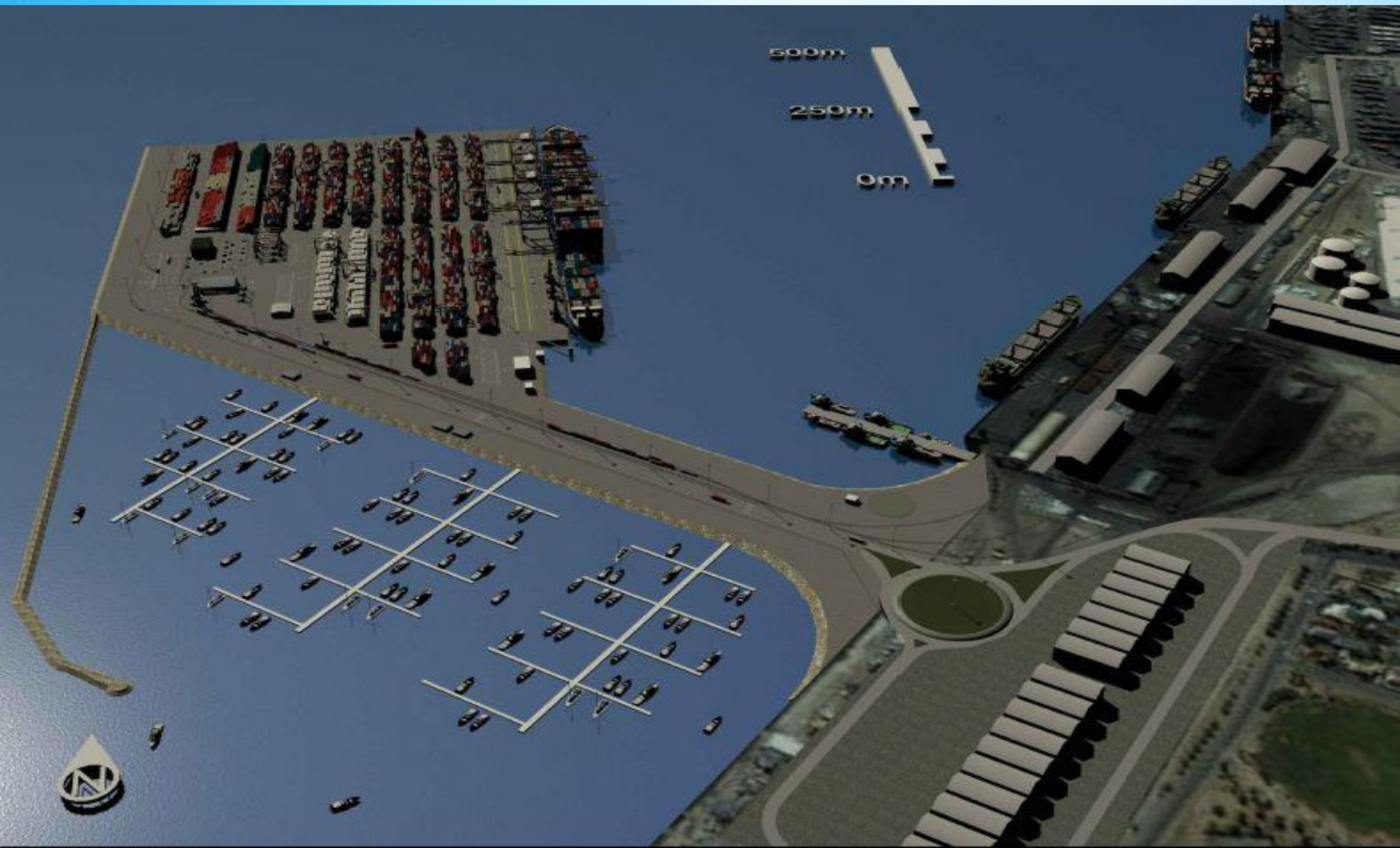




The New Container Terminal on Reclaimed Land location



New Walvis Bay Container Terminal





The New Container Terminal on Reclaimed Land features and progress



Main Features of the new Container Terminal

1. Will create 40 hectares of new land to be used for construction of a modern **container terminal**;
2. Will add 600m of quay length to existing 1500m;
3. Will add 650,000 TEU p.a. capacity to existing 350,000.
4. Will cost approximately NAD 3 billion;
5. Will create much needed additional capacity for all port business to expand (containers, bulk, rig repair, etc.).

Project Progress

1. Tenders currently being evaluated;
2. Contract to be awarded by August 2013;



NEW SADC GATEWAY PORT





PORT OF WALVIS BAY SADC GATEWAY TERMINAL

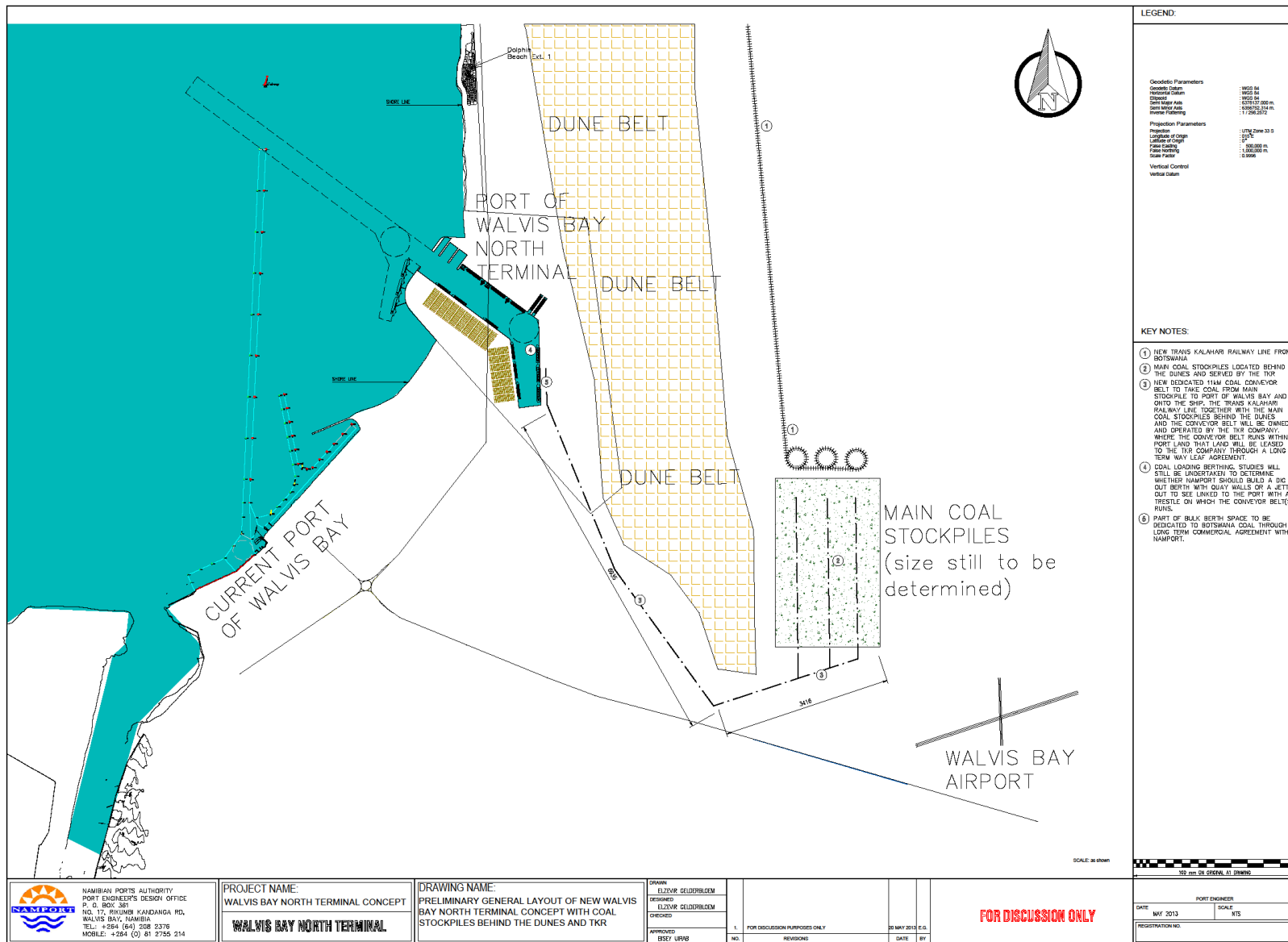


Several Mega Projects have surfaced in the last few years that will not be feasible without the SADC Gateway Terminal:

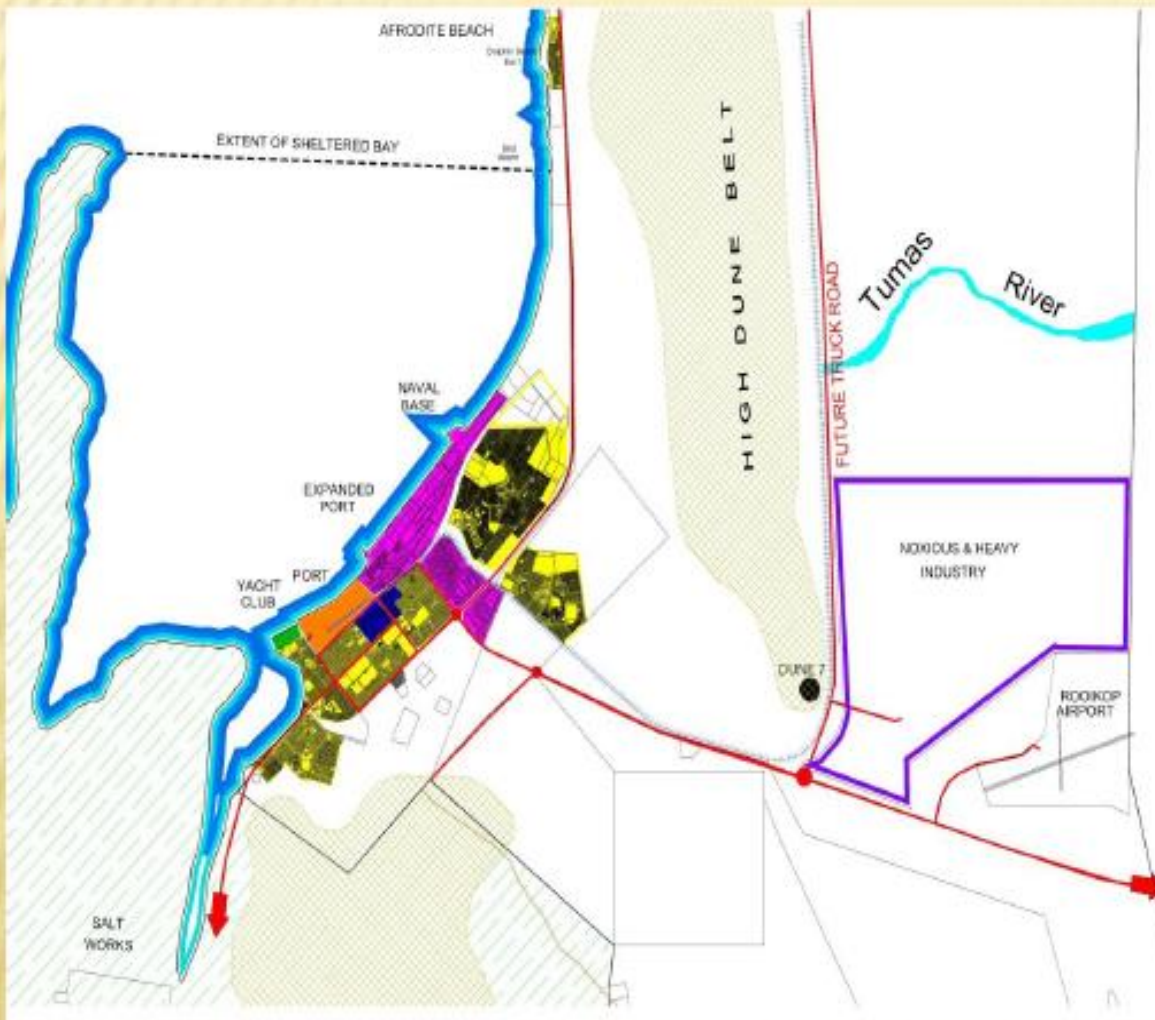
1. The Trans Kalahari Railway Line;
2. Botswana Coal Exports;
3. Mega Logistics Parks in Namibia (NDP4);
4. Namibia Crude Oil Industry;
5. Large scale Namibian mining product exports;
6. Coal exports from Dordabis;
7. Iron ore exports from Deep yellow and WB area
8. Magnetite and many more



PORT OF WALVIS BAY NORTH TERMINAL - location



EXISTING LAND USE

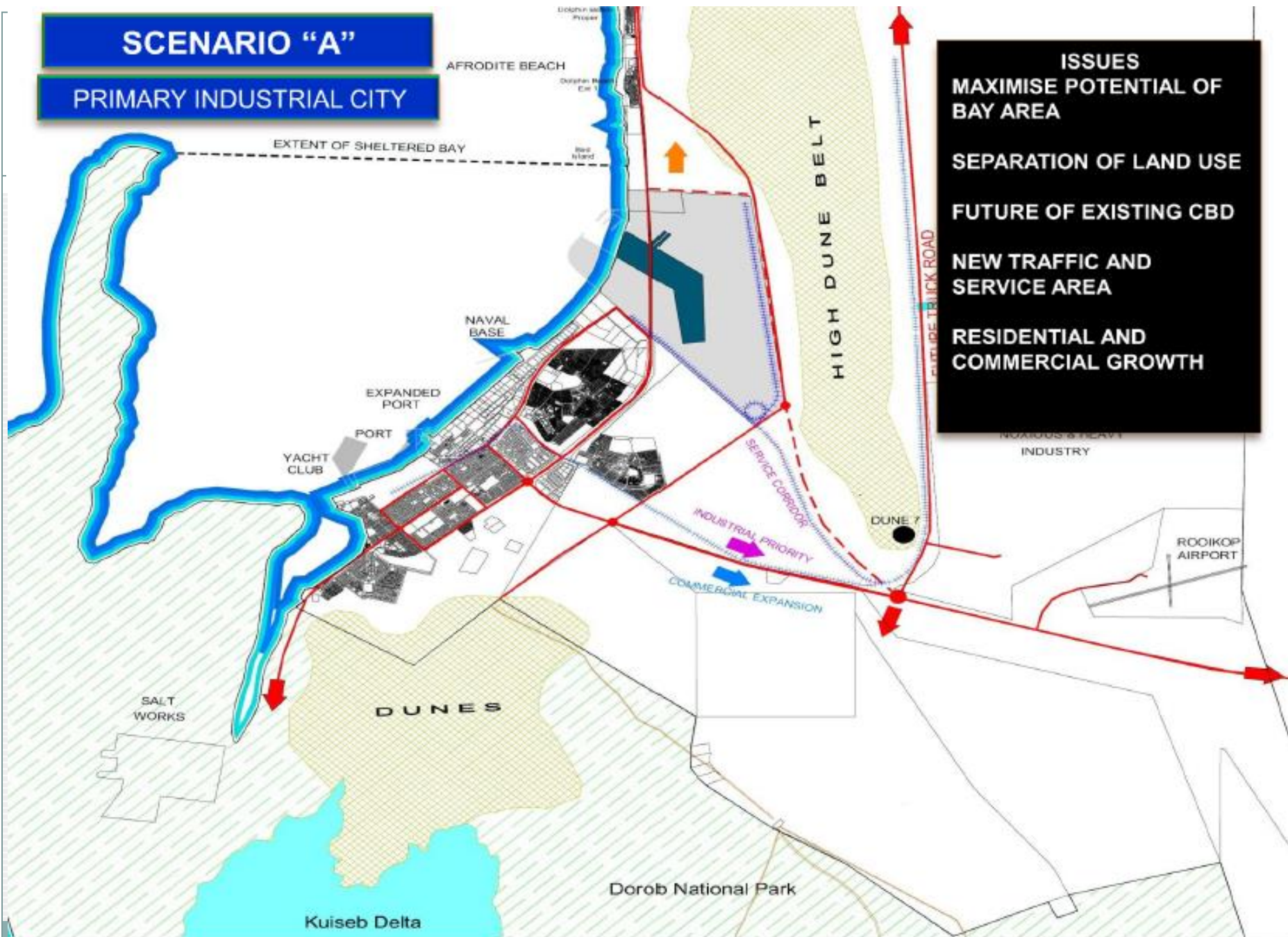


EXISTING LAND USE

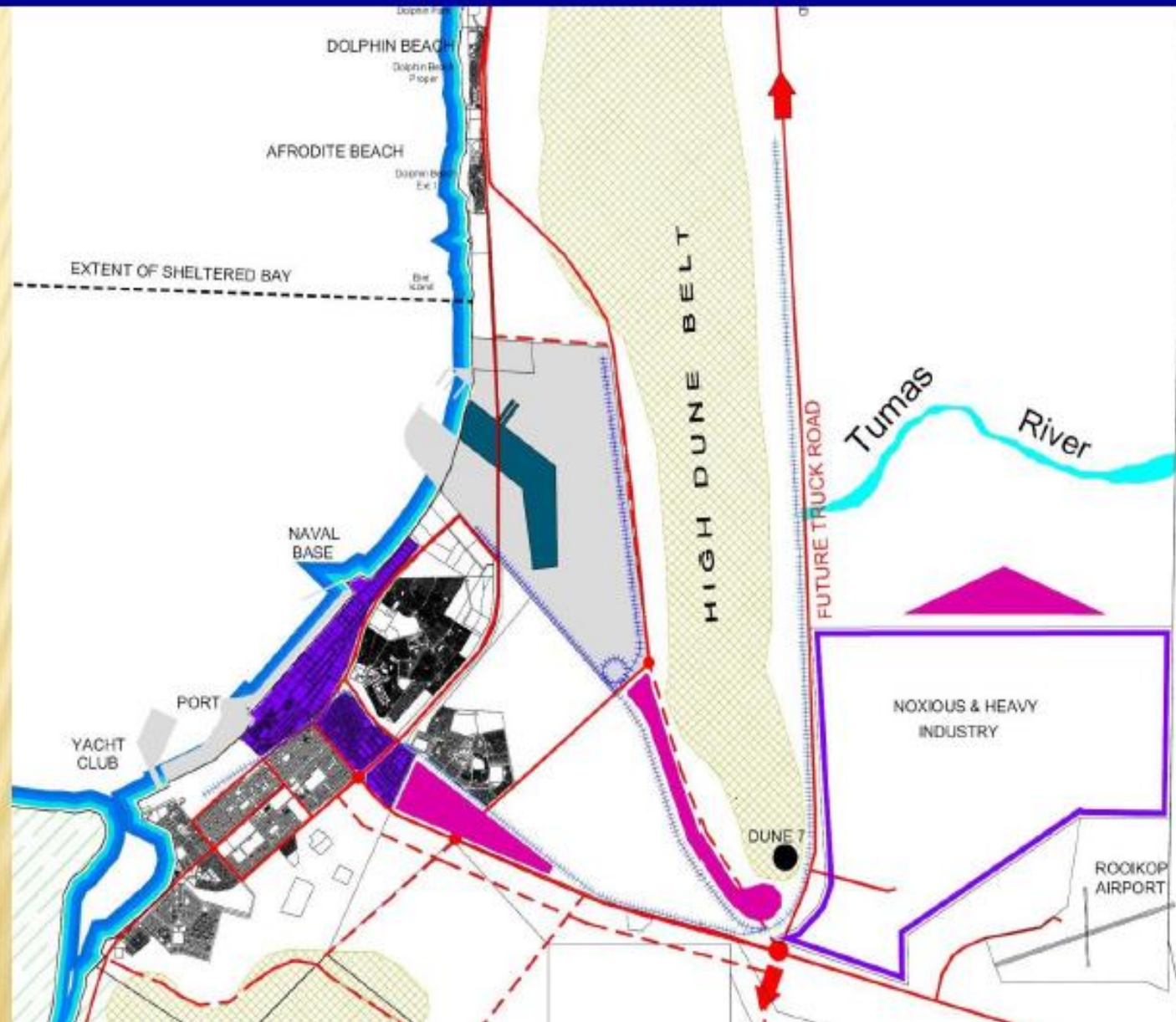
RESIDENTIAL	1,050 Ha
<ul style="list-style-type: none"> Kuisebmond Naraville Meersig/Lagoon WB Central Langstrand 	310 Ha 130 Ha 320 Ha 220 Ha 70 Ha
BUSINESS/ OFFICE	55 Ha
INDUSTRY	340 Ha
<ul style="list-style-type: none"> Light Industry Heavy Industry 	310 Ha 130 Ha
TOTAL	1,445 HA

SCENARIO "A"

PRIMARY INDUSTRIAL CITY



INDUSTRIAL GROWTH DIRECTIONS



Walvis Bay: New SADC Gateway Port





The SADC Gateway Terminal Concept (1 of 2)



Main Features of the New North Port Development

1. Total of 1330 hectares of Port Land (vs 105 ha current port);
2. 10,000m of quay walls and jetties to yield approximately 30 large berths (current port = 1,500m of quay walls);
3. World Class Ship and Rig Repair Yard plus Oil and Gas Supply Base;
4. Huge Under Cover Dry bulk Terminal (>100 million tons p.a.);
5. Car Import Terminal / Ro-Ro Terminal;
6. Passenger Terminals;
7. Container Terminal (if needed in future);

CONTINUED ON NEXT SLIDE ../.....



The SADC Gateway Terminal Concept (2 of 2)



Main Features of the New North Port Development (continued//..)

8. Liquid Bulk Terminal with VLCC (very large crude carrier) berths;
9. Multipurpose and break bulk terminals;
10. Backup storage areas / dry ports;
11. Small Craft harbour with Port Control Tower;
12. Small Boat Marinas;
13. New high capacity rail, road, pipeline and conveyor link to the area behind dune 7;
14. Will de-congest the current Town of Walvis Bays traffic corridors.
15. Will link up with the heavy industrial park behind dune 7

**THE NORTH TERMINAL = SADC LOGISTICS HUB
PORT [NDP4]**



NAMPORT IMPACT ON ECONOMY

PROJECT	IMPACT ON THE NATIONAL ECONOMY	JOB CREATION INPUTS	
		Area	jobs
New Walvis Bay major Container Terminal on Reclaimed Land (N\$ 3 billion) Project completion 2016.	Expanding growth of the national economy, Hub facilitation & Regional integration = CREATION OF MAJOR LOGISTICS HUB	Namport Employment	200
		External to Namport	1200
North Terminal – Walvisbay N\$20 billion	Expand bulk, break-bulk, Ship & Rig repair = CREATION OF MAJOR LOGISTICS HUB		
New dedicated Rig Repair Quay (N\$ 150 mil) Construction of New Container Terminal on Reclaimed land will free up berth 1 for this purpose	Expanding growth of economy through Ship & Rig repairs with integration into the West Africa Coast offshore oil exploration	Ship/Rig repair industry	4500
Luderitz Port Development (First Phase – N\$500 mil) – N\$16 billion	Expanding growth of the national economy and regional integration.	Jobs (Namport and external)	1000
Replacement of 50 year old Tanker Jetty N\$600 mil	Only fuel importing facility in the country. Necessary for security of fuel supply		
Walvis Bay Marina Development Phase 1 (N\$ 350 mil) Project completion 2015.	Initiative aimed at developing a Marina Facility with an SME component for young business entrepreneurs	Residential Jobs	60
		Waterfront jobs	80
		SMEs (Stalls)	100
		SME (Tour Owners)	20
		SME (Tour Guides)	20



THANK YOU FOR YOUR ATTENTION AND INTEREST!

Christian Faure
Executive: Marketing and Strategic Business Development
cfaure@namport.com.na